

Knowledge Organiser Year 4 Art: LS Lowry

Biographical information	
Full name	Laurence Stephen Lowry
Born	1 st November 1887
Occupation	Rent collector
Died	23 rd February 1976, aged 88, from pneumonia.
Nationality	English
Art movement	Naïve art
	Cared for his ill mother after his father's death. Remained unmarried.

Who? What? Where?
 L.S. Lowry was a British painter, who explored the environment he lived in through his art and represented the world people had created as a result of industrialisation.



“You don't need brains to be a painter, just feelings.”

Tier 3 vocabulary	
Naïve art	Art made by artists who have had no formal training in an art school or academy.
Urban	In a city or town.

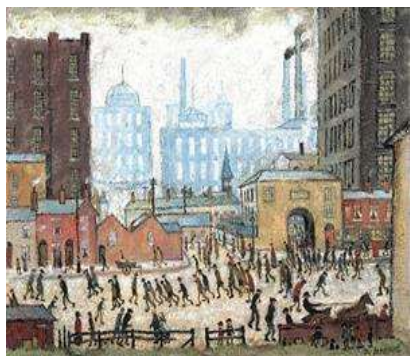
Key facts

Lowry learnt to paint at night school as an amateur and mostly painted using a five-colour palette of oil paints.

Ivory black, vermillion, Prussian blue, yellow ochre and flake white.

Lowry is famous for painting the industrial areas of Northwest England with its cotton mills and factory chimneys. His paintings capture people going through the ritual of daily life in this environment.

A large collection of Lowry's work is on permanent public display in *The Lowry*, an art gallery built in Salford especially for his art and named in his honour.



'Coming from the mill' 1930	'Industrial landscape' 1955	'VE Day' 1945
--------------------------------	--------------------------------	------------------

Related (prior) knowledge: colour theory – primary, secondary colours, complementary colours, drawing and shading (various years)

Related future learning: Know about great artists and designers and understand the historical and cultural development of their art forms.