



# What is Executive Function?

Flash PD (30 mins) 24<sup>th</sup> September 2019

---



## **Objective 1: Develop systems to support the achievement of low prior attaining pupils**

- 1. The role of *Executive Function* in the underperformance of low prior attaining (LPA) pupils.**

***Executive Function is definable as a set of control processes that allow individuals to manage and direct their attention, thoughts and actions to meet adaptive goals (Samuels, et al., 2016).***

# Recap on Executive Function...

Professor Becky Allen breaks EF down into 3 areas:

- i) Attention** (Inhibitory control: being able to ignore distractions, pay attention, and not act impulsively)
  - ii) Working Memory** (Being able to keep information in mind, and use it effectively and fluently)
  - iii) LTM & crystallised intelligence** (Recalling information effectively and accurately to make relationships and offer explanations)
-

# Key Messages...

- **Your Executive Function is the cognitive processes that guide, direct and manage thinking, emotional responses and behaviour.**
  - **Essentially, if you have cognitive control, you can learn and thrive in a school environment and in life.**
  - **EF is really important because EF abilities can transfer across a variety of cognitive, emotional and social domains.**
  - **Key skills are: prioritising, planning, self checking and setting goals**
-

## Activity

*Read the sheet 'Some thoughts on Executive Function'*

- 1. What aspects of the CPS Curriculum currently support the development of executive function in all pupils?*
  - 2. What aspects of the CPS Curriculum currently support those pupils who have executive function difficulties?*
  - 3. What could we consider across the school?*
-

## Between now and next Tuesday, I am going to...

### Currently doing

RP

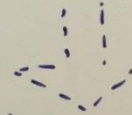
Chunking/  
Pausing

- Choral responses
- Visuals (dual coding)
- Visual TTs
- DLG
- GR
- Active listening - Tracking
- Framing
- Working walls
- Consistency / Constancy
- Clarity

### Could do

+ interactions with content

(use of stock phrases)



Sentence stems (TWR)

- Encourage active reading note taking
- Greater emphasis on oracy
- Pupils comfortable with being uncomfortable
- Structured planning



Any questions?



---

# Recap of Key Messages...

- **Your Executive Function is the cognitive processes that guide, direct and manage thinking, emotional responses and behaviour.**
  - **Essentially, if you have cognitive control, you can learn and thrive in a school environment and in life.**
  - **EF is really important because EF abilities can transfer across a variety of cognitive, emotional and social domains.**
  - **Key skills are: prioritising, planning, self checking and setting goals**
-